



Werner Elementary School Science & Engineering Fair

Friday, April 3, 2025

[Please click here to complete the online registration form.](#)



Let's have fun and enjoy the best event to improve your science knowledge!

Science & Engineering Fair Details

Projects on Display: Friday, April 3rd. Open-house is scheduled for Friday 5:00-6:30pm. More details to follow.

Entry Drop-off Times: Projects should be brought to the gym afterschool on Thursday, April 2 (3:45-4:15) or before school on Friday, April 3 (8:15-8:45).

Location: Werner Elementary School, 5400 Mail Creek Ln., Fort Collins, CO 80525

Grade Levels: Students from all grade levels are invited to participate. We will have two divisions, grades K-2 and grades 3-5.

Categories: Projects should follow either the Scientific Method Process or the Engineering Design Process. Other types of science projects are welcome to be put on display but may not be selected for awards.

Suggested Themes & Ideas

Scientific Method

Behavioral Science

Reaction to stimuli

Botany and Agriculture

Plants

Consumer Sciences

Product testing

Earth Sciences

Rocks and minerals

Glaciers

Volcanoes

Mountains

Ecology

Math/Computers

Probability

Statistics

Mathematical relationships

Physical Science

Light, prisms, color

Motion, gravity

Heat Energy

Properties of materials (wood, metals,

Sound

Simple machines (pulleys, levers, gears

Electricity

Magnetism

Chemistry

Zoology/Medicine

Medicine and the human body

Animals/Wildlife

Engineering

Engineering

Water treatment

Solar energy/insulation

Structures (bridges, buildings)

New inventions

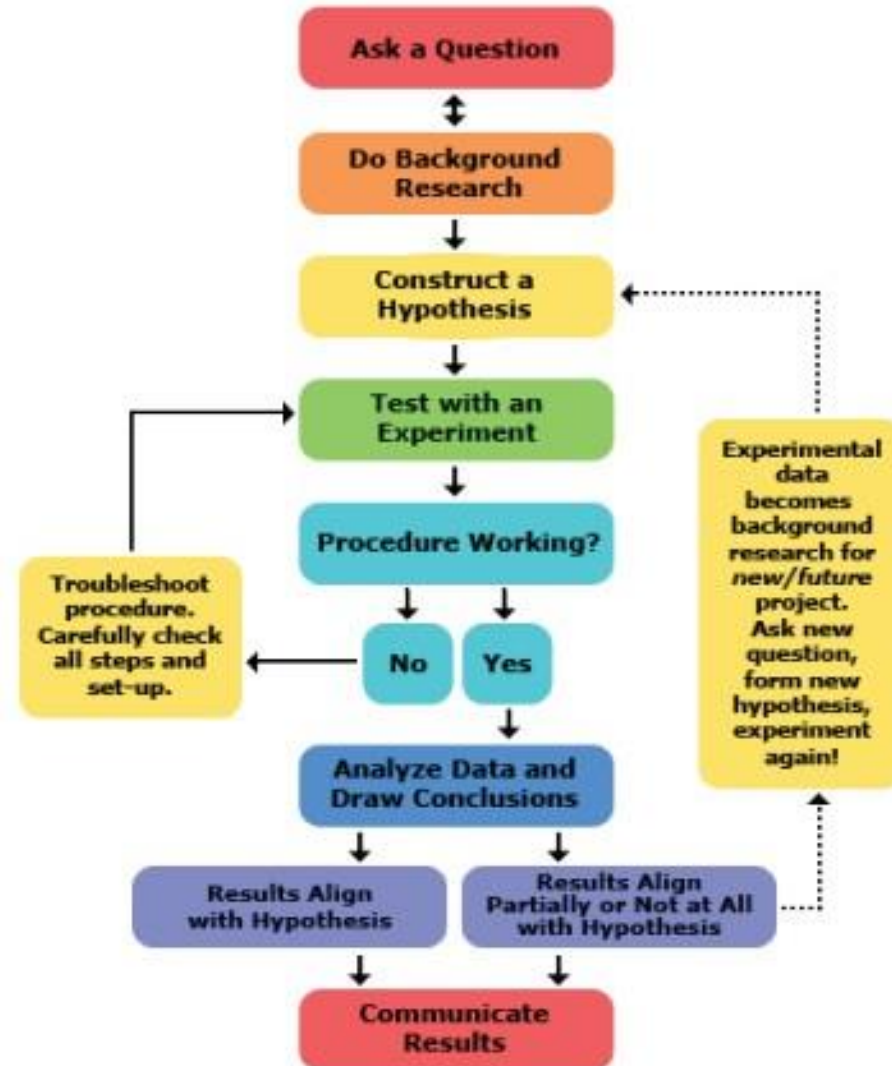
Mechanics (auto, bicycles)

Design

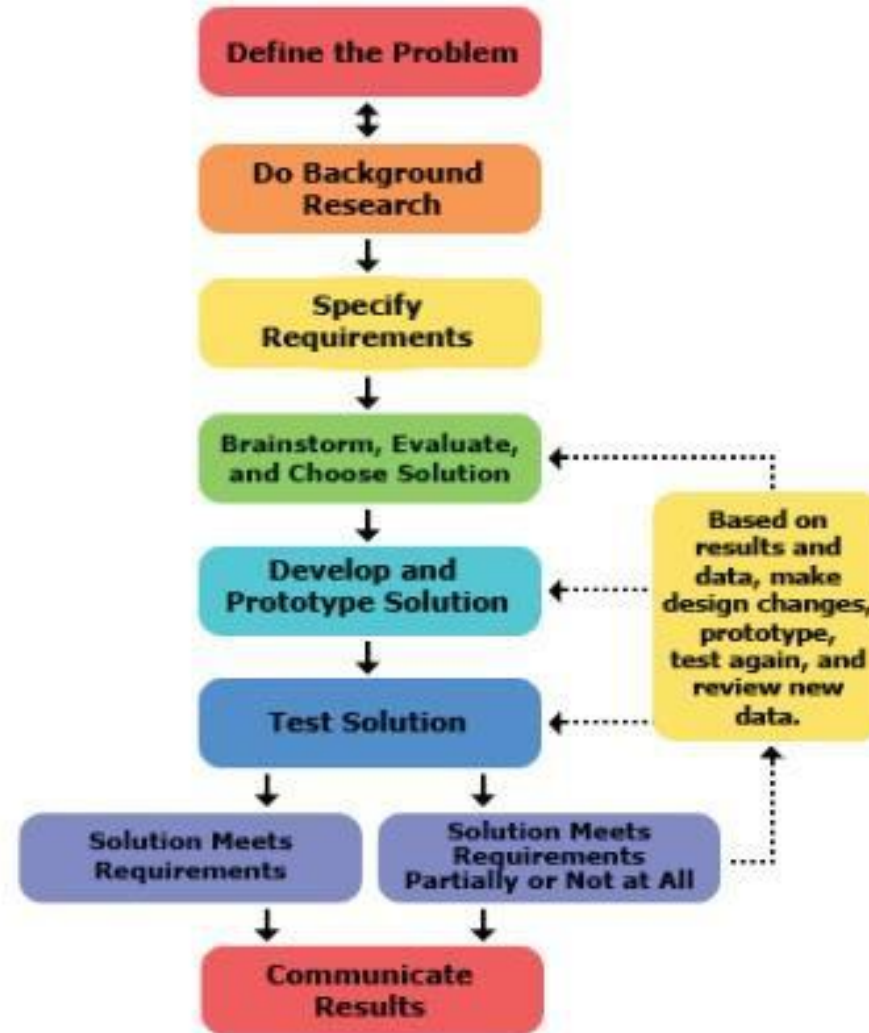
Aeronautics (flight, airplane design, wind tunnels)

Pollution control

Scientific Method

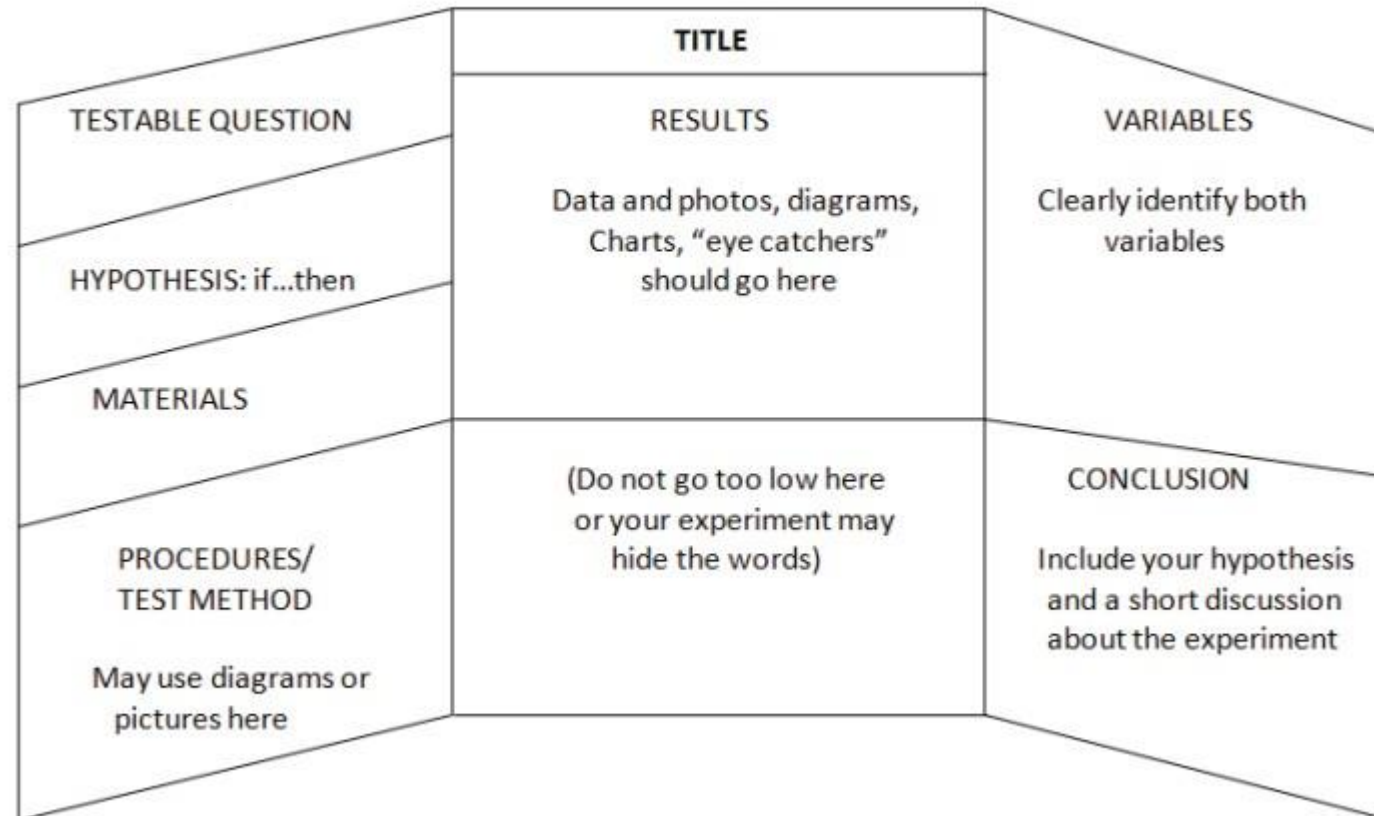


Engineering Design Process

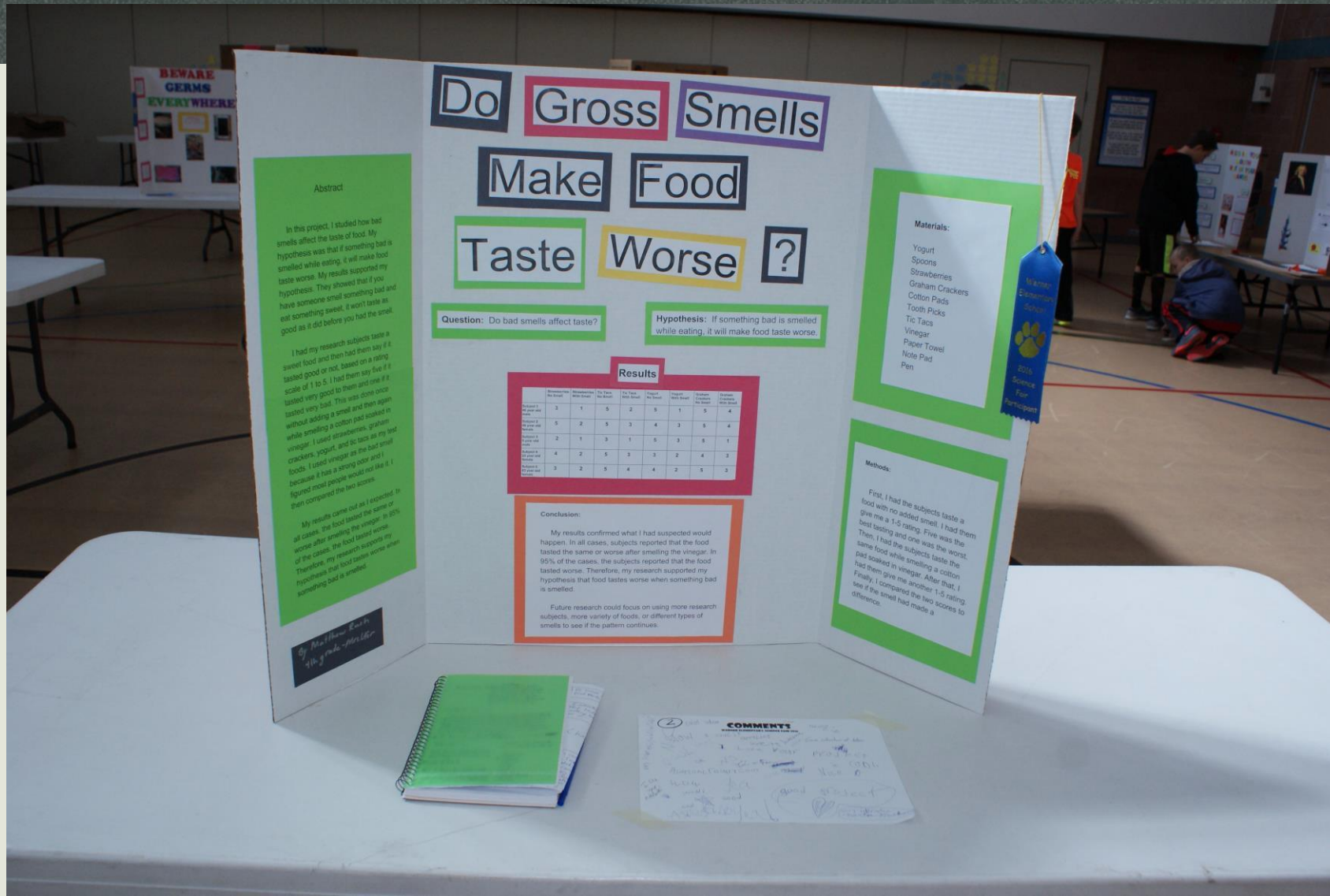


How to Display your Project

Scientific Method - Display Board Template



Example- Using the Scientific Method



Example- Using the Scientific Method

Questions & Hypothesis

1. What color do you think the carnation will absorb the fastest?

I think the carnation will absorb red the fastest because it is a bold primary color that is distinctive.

2. How long do you think it will take for the carnation to absorb the color?

I think it will take 24 hours for the colored water to move up the stem and into the petals.

3. What happens if we put a carnation in 2 colors?

I think in the middle of the flower it will turn the combination of the two colors.

Designing the Experiment

Materials:

- 4 White Carnations
- 4 plastic cups
- Food Coloring Red, Yellow, Blue, and Green
- Water

Procedure for single color:

- Fill a cup half full of water.
- Put one drop of food coloring in the water. Add one drop of perfume or oil to the water. Add the water to the cup so it is enough to create a flower cup.
- Put the carnation in the water and let it sit for 24 hours.
- Take the carnation out and place it in the water with the other color.

Procedure for 2 colors:

- Put two colors in the water for the same time.
- Check up first on water so that water is same amount of water so that water is same amount of water.

Observations:

The carnations in the red and blue water absorbed the color faster than the yellow and green.

My hypothesis that red would be the first to absorb was partially correct.

The color took only 2 hours for absorb into the flower petals instead of 24, which was my hypothesis.

The light and carnation petals turned the color of their stem water first and then gradually merged with the other color.

The darker color moved to the lighter color for a combination color.

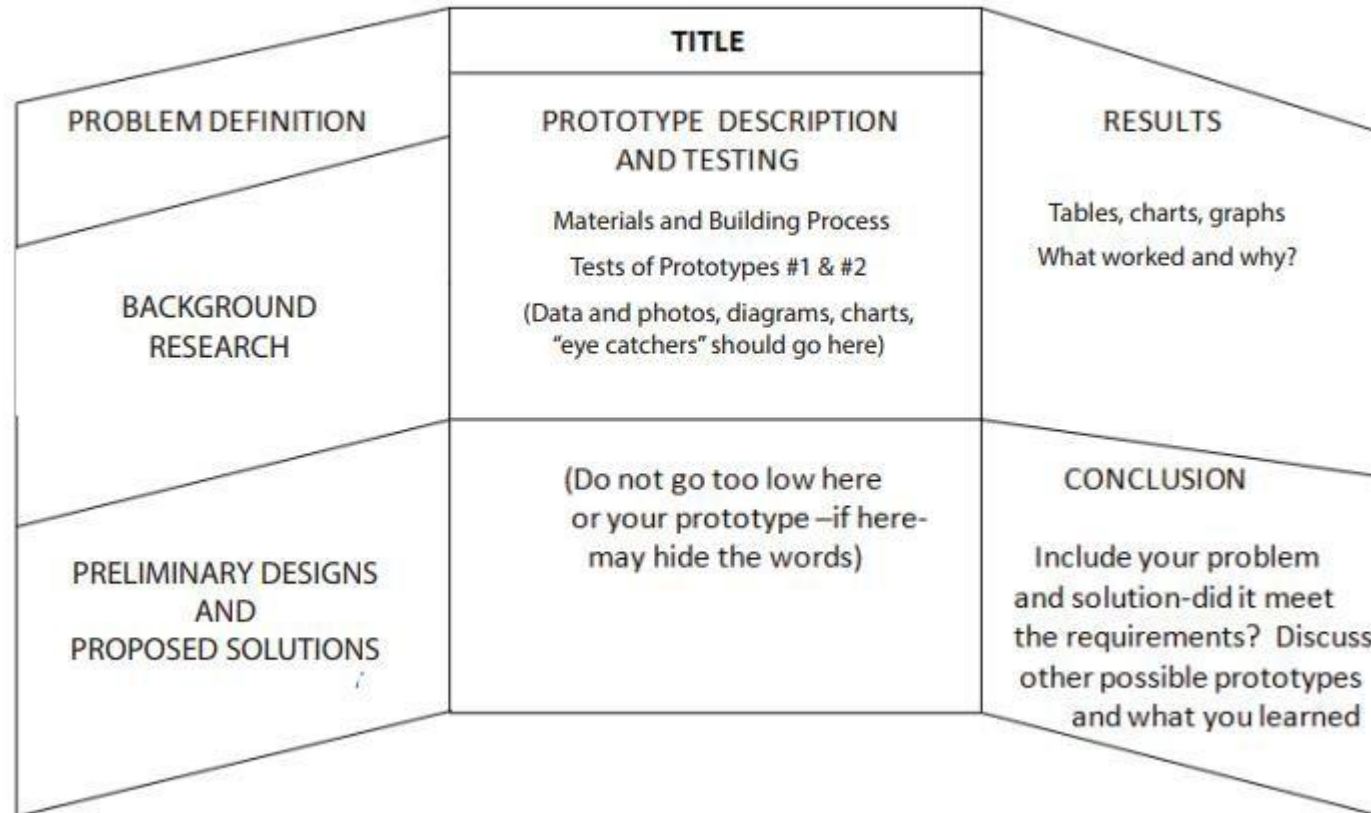
Conclusion

Comments

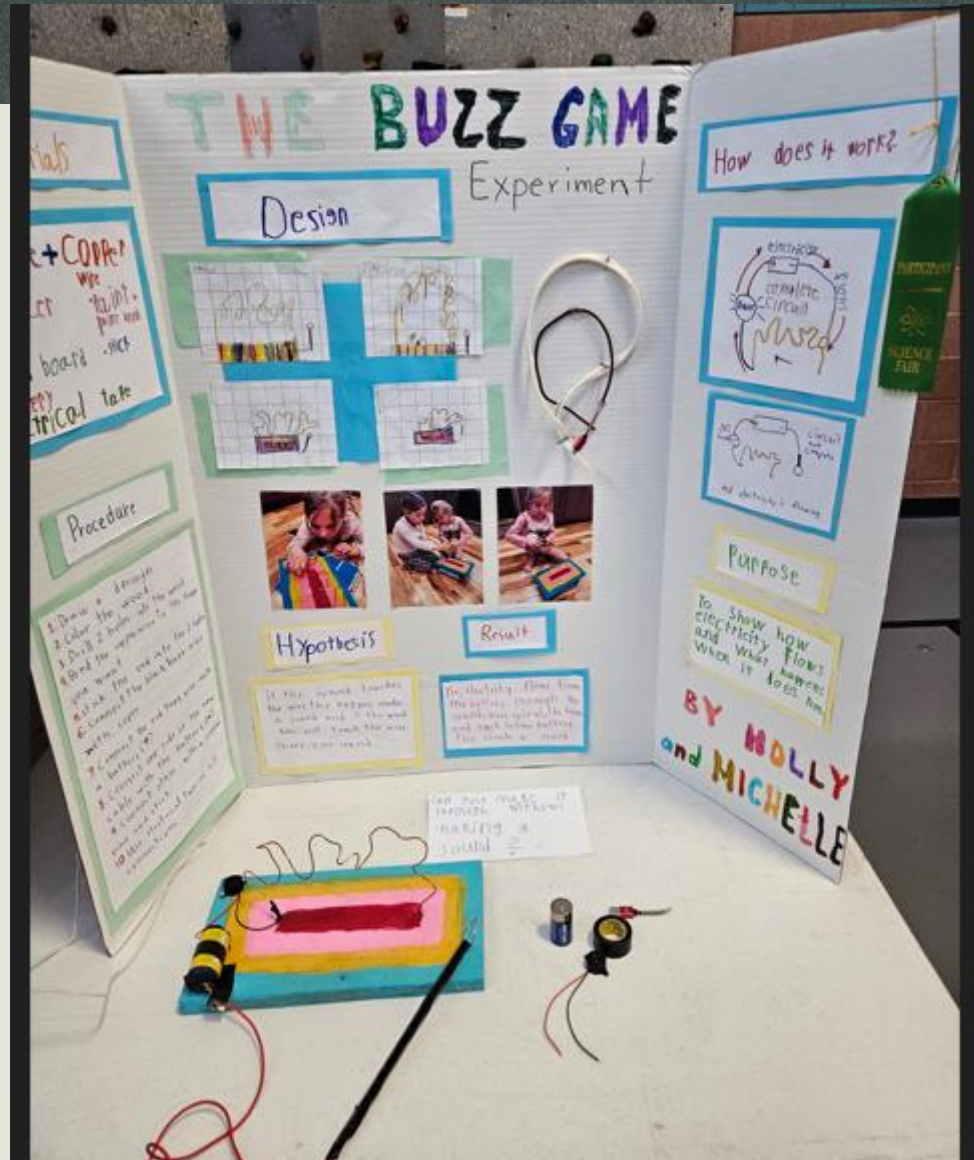
Time	Color	Observation
0	Red	White carnation
1	Red	White carnation
2	Red	White carnation
3	Red	White carnation
4	Red	White carnation
5	Red	White carnation
6	Red	White carnation
7	Red	White carnation
8	Red	White carnation
9	Red	White carnation
10	Red	White carnation
11	Red	White carnation
12	Red	White carnation
13	Red	White carnation
14	Red	White carnation
15	Red	White carnation
16	Red	White carnation
17	Red	White carnation
18	Red	White carnation
19	Red	White carnation
20	Red	White carnation
21	Red	White carnation
22	Red	White carnation
23	Red	White carnation
24	Red	White carnation
25	Red	White carnation
26	Red	White carnation
27	Red	White carnation
28	Red	White carnation
29	Red	White carnation
30	Red	White carnation
31	Red	White carnation
32	Red	White carnation
33	Red	White carnation
34	Red	White carnation
35	Red	White carnation
36	Red	White carnation
37	Red	White carnation
38	Red	White carnation
39	Red	White carnation
40	Red	White carnation
41	Red	White carnation
42	Red	White carnation
43	Red	White carnation
44	Red	White carnation
45	Red	White carnation
46	Red	White carnation
47	Red	White carnation
48	Red	White carnation
49	Red	White carnation
50	Red	White carnation

How to Display your Project

Engineering Design Process Display Board Template



Examples- Engineering Design Process



Safety

1. The use of dangerous chemicals, open flames, and explosives will not be permitted with any display.
2. Live animals, poisonous plants, bacteria or fungi will not be permitted with any display. (This includes mold, spoiled food, etc.) When parts of a project can't be displayed, please use photographs, drawings, or models to illustrate the project.
3. If batteries are used, they must be sufficiently charged to maintain operation throughout the time of the fair. If you need an electrical outlet for your project, please contact Mr. Putman before the science fair to reserve space by an outlet.
4. Studies involving the use of drugs or alcohol WILL NOT be permitted.
5. Werner Elementary reserves the right to refuse any exhibit which is considered unsafe.

Questions

Can I work with a partner?

Yes! Individual or group projects (2-3 students) are allowed.



Please contact Mr. Jeff Putman (jputman@psdschools.org) with any other questions.